

LAR POWER, CHIEF EXECUTIVE, LCC

“ Lar was appointed as Chief Executive of Leitrim County Council in March of this year. A native of County Wexford, he graduated from University College Dublin in 1991 with a Bachelors Degree (Honours) in Civil Engineering and in 2003 he graduated from Dublin City University with a Masters of Business Administration. Lar has worked his entire career in the local authority sector. Prior to Leitrim Lar worked in Wexford County Council, Enniscorthy Urban District Council, Waterford County Council, Waterford City Council and finally Waterford City and County Council. Lar was promoted to Director of Services in 2003 and Deputy Chief Executive of Waterford City and County Council in 2014. Lar has extensive experience in the local authority sector and is very passionate about the role of the local authority in place making.



SEÁN KYNE, TD

“ A native of Moycullen, Co. Galway, Minister of State Seán Kyne attended St. Mary's College in Galway City before attaining a primary degree and Master's degree in Agricultural Science at NUI, Galway and UCD respectively. For over a decade Minister of State Kyne worked as an agri-environmental consultant with particular responsibility for Rural Environmental Protection. From 2004 – 2011 Minister of State Kyne served as a member of Galway County Council and since 2011 represents the constituency of Galway West and Mayo South in Dáil Éireann. As a TD he has served on the Oireachtas Committee on Jobs, Enterprise and Innovation, as Vice Chair of the Oireachtas Committee on European Union Affairs, and as Chairman of the Fine Gael Committee on Arts, Heritage and the Gaeltacht.



MR. MEL GAVIN

“ Mel is a Civil & Structural Engineer and Certified Energy Manager with over 14 years' experience in design and project management on a wide range of private and public projects including, sustainable buildings, wind farms, energy efficiency, product and process design, waste and resource efficiency. Mel currently manages the Contract Research Unit at IT Sligo providing outreach external engagement in research, development and innovation support to regional enterprises, communities and individuals. Mel is an enthusiast for energy transition in the North West, working as a Mentor and Technical Advisor on the SEAI Sustainable Energy Communities Programme, and supporting wider momentum toward economic, social and environmental sustainability.



CAROLE COLEMAN MASTER OF CEREMONIES

“ Carole Coleman is a journalist, broadcaster and speaker. She currently presents and reports for This Week - Irelands oldest radio news show, on RTE radio One each Sunday. Carole has held a number of positions in RTE including Environment & Education Correspondent and Washington Correspondent. Carole has written two books on American culture and politics and her writing has appeared in the Irish Independent, and Irish Examiner. Carole supports local initiatives in Leitrim to connect with the diaspora and bring jobs to the region.



DERMOT RYAN, MEMBER OF CABINET, EU COMMISSION AGRICULTURE AND RURAL DEVELOPMENT

“ Dermot Ryan has a wide range of public service experience, having worked in a number of Government Departments/Offices as well as in the European Commission. Dermot has worked in the Office of the Revenue Commissioners, Department of the Environment & Local Government, Department of Finance & Department of Agriculture, Food & the Marine. Since moving to Brussels, he has worked in the Department of Foreign Affairs as the Agriculture Counsellor in the Irish Permanent Representation to the EU. He chaired the EU's Special Committee on Agriculture during Ireland's Presidency of the Council of the EU in 2013. For the past four years, he has been a member of the Cabinet of Phil Hogan, EU Commissioner for Agriculture & Rural Development. Within the Cabinet, Dermot is Senior Advisor & Communications' Advisor. He is responsible for relations with the Council of the EU, the European Parliament as well as National Parliaments.



PROFESSOR JIM WALSH

“ Jim Walsh is a research Professor of Geography in the National Institute for Regional and Spatial Analysis (NIRSA) and a member of Maynooth University Social Sciences Institute (MUSSI). He was Vice-President of the University between 2005 and September 2016. Prior to 2005, he was Head of the Department of Geography in Maynooth for ten years, when he was a founding member of the National Institute for Regional and Spatial Analysis (NIRSA). His research interests are in rural and regional development, demographic change and spatial planning. He has participated in several European research projects and led many projects funded by research bodies in Ireland. He has produced or contributed to more than 170 academic publications. He has extensive experience as an advisor in many areas of public policy including membership of the National Economic and Social Council, the Expert Advisory Groups for the National Spatial Strategy and its successor the National Planning Framework Ireland 2040, and the Commission for the Economic Development of Rural Areas.



SEAN MCGOWAN, CATHAOIRLEACH, LCC

“ Sean Mc Gowan was first elected onto Leitrim Co. Council in June 1991 and re-elected at each subsequent election since then, topping the poll in both the 1999 & 2004 Local Elections in the Carrick on Shannon Electoral Area. He is currently Cathaoirleach of Leitrim Co. Council, having served as Cathaoirleach previously in '95-'96 & '04-'05. He has served on various committees over the years and is a current member of the Environment SPC, in addition to holding current membership of both AILG & LAMA where he holds the position of Assistant Secretary. He previously served as a member of the former NWHB (North Western Health Board) and was its Chairman in 2003-04, and is a former member of ICBAN.

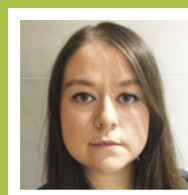


CASE STUDY FACILITATORS

Colm Keane is Business Development Manager at The Hive, Carrick on Shannon. Colm joined just before the centre opened in 2013 and he manages a wide range of assignments across every aspect of facility, systems and people management. A graduate of NUI Galway and University of Wales, Colm has previously worked in senior positions in tourism, financial services and food processing. See www.the-hive.ie for more information.

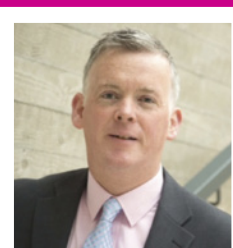


Caoimhe McCarthy is a Programme Executive within the Sustainable Energy Communities team at SEAI. Originally from Ireland, Caoimhe attended UCD where she completed her degree in Geography, Planning and Environmental Policy, followed by a Masters in Sustainable Energy and Green Technologies. Prior to joining SEAI, Caoimhe lived and worked in Scotland with an economic and community development agency, Highlands and Islands Enterprise, as part of the Energy & Low Carbon Team.



DAVID MINTON, DIRECTOR, NWRA

“ Geographer, advocate for all things rural and with an interesting connection to Mohill, David is currently Director of the Northern and Western Regional Assembly (NWRA). Crafting the first Regional Spatial and Economic Strategy, the NWRA has been inspired by places like Mohill to create Ireland's first regional smart strategy. He has a Masters in Rural Development, Management and is a Chartered Director.



Fergal McPartland is involved in a number of community development organisations in Drumshanbo. He has worked with Drumshanbo Community Council on the food hub project since 2005 in a variety of roles and is currently part time manager of the centre. In his day job, he manages Drumshanbo Credit Union.



Sinéad McDermott, Tourism Officer for Leitrim has over 20 years experience in the tourism industry. Sinéad is undertaking a Masters in Marketing with IT Sligo and comes with a wealth of knowledge in the tourism sector both in Marketing and Product Development. Sinéad is a key contributor to the development of Slow Adventure Tourism where, as part of a Northern Periphery Programme she represented Ireland and worked with 6 partner countries to research and develop the concept.



ENDA STENSON MCC

“ Councillor Enda Stenson is an experienced local representative, being an elected 'independent' member of Leitrim County Council since 1999. Cllr Stenson was appointed a member of the Irish delegation to the European Committee of the Regions (CoR) in January 2015 and is also a member of the Northern and Western Regional Assembly. Cllr. Stenson has focused on agricultural issues since joining the CoR and has an active member and European Alliance Group coordinator in the NAT Commission. Cllr Stenson drafted the CoR's opinion on the revitalisation of rural areas through Smart Villages. As a farmer himself he has repeatedly highlighted the very practical concerns and challenges facing farmers in Europe today.



DR. STEPHEN BRENNAN

“ Dr. Stephen Brennan is currently Chief Digital Advisor to the Irish Government and founder and CEO of the healthcare informatics company Centuri Analytics. He was the author of Ireland's first National Digital Strategy published in 2013. His passion is the application of digital technology and data analytics to drive innovation and solve big challenges. He is the member of numerous government fora and the EU commission member states board on digital entrepreneurship. He was inspired to develop the flagship Irish Government digital enterprise initiative: the Trading Online Voucher Scheme, whilst sitting on a broken-down tractor in Cavan.



SMART TOWNS & VILLAGES

AN OPPORTUNITY TO REVITALISE RURAL IRELAND

SMART TOWNS & VILLAGES

AN OPPORTUNITY TO REVITALISE RURAL IRELAND



Leitrim County Council are delighted to be hosting this National Conference “Smart Towns and Villages – An opportunity to revitalise Rural Ireland”. We invite you to participate in all elements of the conference. Following the adoption by the Committee of the Regions of their recent paper on Revitalisation of Rural areas through Smart Towns/Villages and an ongoing process in Leitrim of Town regeneration, Leitrim County Council are hosting this national conference to highlight the issues, opportunities and progress achieved in developing this concept.

INTRODUCTION

PROGRAMME

Master of Ceremonies: Carole Coleman

9am: Registration Tea/Coffee

9.30am: Welcome Address
Seán Mc Gowan, Cathaoirleach, Leitrim County Council

SETTING THE SCENE

Followed by Panel Discussion

9.40am: “EU Perspective – Cap – Rural Development”
Dermot Ryan, EU Cabinet Member

10am: “Changing Demographics Movement from Rural to Urban and consequences!”
Professor Jim Walsh, Maynooth University Geography Department

10.20am: “National Perspective on Rural Development and New Government Proposals”
Seán Kyne, TD, Minister of State

10.40am: “Regional Perspective”
David Minton, Director, Northern & Western Regional Assembly

11am: Tea/Coffee

IDENTIFYING THE OPPORTUNITIES

Followed by Panel Discussion

11.20am: “Vision of a Smart Town/Village”
Enda Stenson, MCC, Committee of the regions presentation adopted opinion

11.40am Local Government Perspective “Place Making in Leitrim – Local Actions in Rural Towns”
Lar Power, Chief Executive, Leitrim County Council

12pm: “The Role of Digital Technologies in Sustaining Rural Society”
Dr. Stephen Brennan, Chief Digital Advisor, Irish Government

12.20pm: “Smart Community – Mohill Town Case Study” –The Story so far...

Mel Gavin, Contract Research Unit, Innovation Centre, IT Sligo

12.40pm: Panel Discussion

1pm: Lunch

BREAK OUT SESSIONS

Highlighting local/regional case studies of best practice

Session 1

2.15pm -3pm

Community Energy incl. Transport
Tourism
Food
Innovation Hubs/Technology

Session 2

3.15pm -4pm

Community Energy incl. Transport
Tourism
Food
Innovation Hubs/Technology

Delegates will have the opportunity to attend two workshops

FACILITATORS FOR BREAKOUT SESSIONS

1.Community Energy including Transport
Caoimhe McCarthy, Programme Executive, SEAI

2.Tourism. “Slow Adventure Tourism” Sinead McDermott, Tourism Officer, Leitrim County Council

3.Food. “The Food Hub”, Fergal McPartland, Manager

4.Innovation Hubs. “The Hive”, Colm Keane, Manager

4.15pm: Closings Remarks – Cathaoirleach.

THE HIVE

The Hive Leitrim’s Technology Enterprise Centre is located in Carrick on Shannon, County Leitrim. The centre is currently home to 38 technology businesses which employ over 90 people in sectors such as research and development, software development, translation services and a range of technology services.

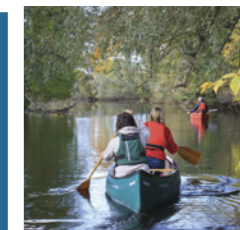
The centre was developed in response to research undertaken which identified the need for contemporary business hub with high speed broadband and flexible workspaces at an affordable price. Since opening at the end of 2013, The Hive has hosted hundreds of events, meetings, training courses and seminars. Leitrim County Enterprise Fund recently announced plans to extend the current building and add another 5,000 sq ft of office and co-working space, which they hope will be completed in 2019. For more information please see www.the-hive.ie



SLOW ADVENTURE TOURISM

Slow Adventure in Leitrim is all about creating inspiring connections with the outdoors. It gives you a chance to explore and engage with wild, open and natural places. You can journey through breath-taking landscapes at a slower immersive pace. You can surrender to the natural forces of the environment as you reflect, reconnect and become closer to nature. There are a number of options available. You can enjoy one, two and three-day experiences. Stay in nature, enjoy bushcraft and foraging, paddle or canoe on water or cycle or walk by water on the Blueway.

Leitrim has developed a series of ‘Slow Adventure’ experiences which offers clients the opportunity to engage with nature and experience the outdoors through various guided journeys. Activities include kayaking expeditions, bushcraft, canoeing, foraging, walking and cycling.



THE FOOD HUB

The Food Hub is a community initiative based in Drumshanbo which provides food grade infrastructure to food & drink SME’s. In 2007, Drumshanbo Community Council refurbished the former Laird’s Jam Factory in the town which had closed in 1990 and has developed a multi-tenant production facility with the support of a range of funding agencies. From humble beginnings the food hub now employs over 80 people across 8 businesses in the dairy, convenience foods & alcoholic beverages sectors and provides food sector training in conjunction with MLSETB, the Department of Social Protection and Leitrim Development Company. A further phase of growth is expected to be completed by the end of the year with the addition of 3 small test kitchens. These projects have been undertaken in partnership with Leitrim County Council with funding from the REDZ Programme and the Town & Village Renewal Scheme courtesy of the Department of Rural & Community Development.



COMMUNITY ENERGY INCLUDING TRANSPORT

The SEAI Sustainable Energy Communities (SEC) programme supports communities to develop energy management skills and knowledge. This includes low carbon transport and heating, and investing in smart technologies.

A key part of this programme is the SEC Network which was established by SEAI in 2015 to support a national movement of SECs. The Network is now made up of over 200 communities operating in every part of the country. By joining the Network, communities can learn about community energy and what they could do locally in their own communities and access support and funding from SEAI to help them to achieve their energy goals and ambitions.



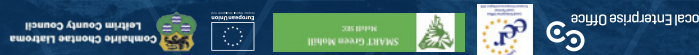
BOOKING & DIRECTIONS

WWW.LOCALENTERPRISE.IE/LEITRIM

CONFERENCE FEE: ELECTED MEMBERS: €75

COMMUNITY GROUPS/OTHER: €30

N53.90316 W7.85542



NATIONAL CONFERENCE

HOSTED BY LEITRIM COUNTY COUNCIL

TIME: 9AM-4.30PM.

DATE: MONDAY OCTOBER 22ND 2018

VENUE: LOUGH RYNN CASTLE, MOHILL, CO. LEITRIM.

We have drafted an agenda for the day which we feel will be both enlightening and helpful – incorporating the European, National, Regional and County perspective with varied practical case study examples. The conference will express opinions you may find relevant to enhancing rural towns and villages.

INTRODUCTION

Leitrim County Council are delighted to be hosting this National Conference “Smart Towns and Villages – An opportunity to revitalise Rural Ireland”.

We invite you to participate in all elements of the conference.

Following the adoption by the Committee of the Regions of their recent paper on Revitalisation of Rural areas through Smart Towns/Villages and an ongoing process in Leitrim of Town regeneration, Leitrim County Council are hosting this national conference to highlight the issues, opportunities and progress achieved in developing this concept.

SMART

AN OPPORTUNITY TO REVITALISE RURAL IRELAND

TOWNS&VILLAGES



SMART

AN OPPORTUNITY TO REVITALISE RURAL IRELAND

TOWNS&VILLAGES

We have drafted an agenda for the day which we feel will be both enlightening and helpful – incorporating the European, National, Regional and County perspective with varied practical case study examples.

The conference will express opinions you may find relevant to enhancing rural towns and villages.

BOOKING & DIRECTIONS

WWW.LOCALENTERPRISE.IE/LEITRIM
CONFERENCE FEE: ELECTED MEMBERS: €75
COMMUNITY GROUPS/OTHER: €30
N53.90316 W7.85542



VENUE: LOUGH RYNN CASTLE, MOHILL, CO. LEITRIM.

DATE: MONDAY OCTOBER 22ND 2018

TIME: 9AM-4.30PM.

NATIONAL CONFERENCE
HOSTED BY LEITRIM COUNTY COUNCIL